

How to ensure the efficacy and safety of new molecules on the immune system and notably on human Tregs ?



Immune InsightT

Save the balance.

We are dedicated to **immune evaluation** of new molecules
in the fields of **cancer, autoimmune and inflammatory diseases**

Immune insightT is a CRO Spin-off which stems from academic research

Preclinical and clinical assessment of novel molecules on the immune system and Regulatory T cells

Immune insightT offers its expertise and technical rigor for the fulfillment of your projects



Molecular insightT

Treg Signature

Transcriptomic

Biomarker



Cellular insightT

Immunomonitoring

Immunophenotyping

Secretome



Animals insightT

PDX-Like models

Efficacy/Toxicity

Recruitment

Transcriptomic analysis

TregSign : original & proprietary Treg signature



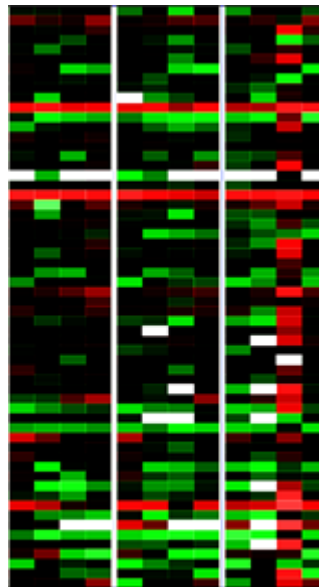
Molecular insight

The signature allows us to determine the impact of a molecule on Tregs and their microenvironment

Around 100 genes associated with both natural Tregs and induced Tregs

Treg Biology assesement by cluster :

- Phenotype
- Suppressive function
- Induction
- Adhesion
- Expansion
- Activation state
- Migration
- Infiltration



TregSign heatmap

Potential clinical applications

- Evaluation of compounds on Tregs/PBMCs
- Patient immuno-monitoring
- Strong diagnostic and prognostic value
- Improvement of patient stratification according to Treg profile for **better treatment choice**



Immune Insight

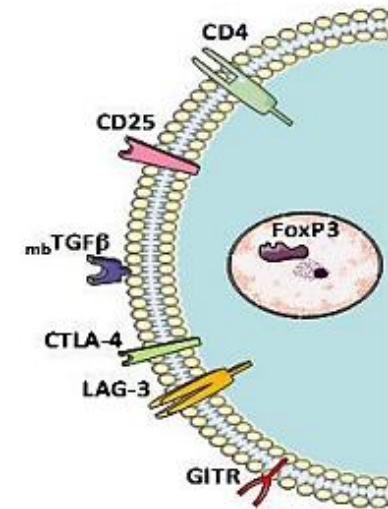
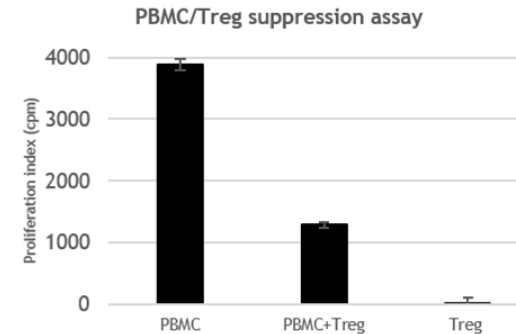
Immunomonitoring & Immunophenotyping



Cellular insight

Treg Isolation and complete characterization / functional assessment

- Immunophenotyping & Characterization
- Suppressive Function Assay
- Recruitment Analysis
- Secretion Profile



Human nTreg

Immune cell Monitoring



ATTUNE™ NxT - Life

MAGPIX® - Merck

- Phenotypical assessment
- Activation Status and Cell Death Analysis
- Cytokine Profil Analysis
- Viability Assay
- Tumour Infiltration



Immune Insight

Pre-clinical Animal Models



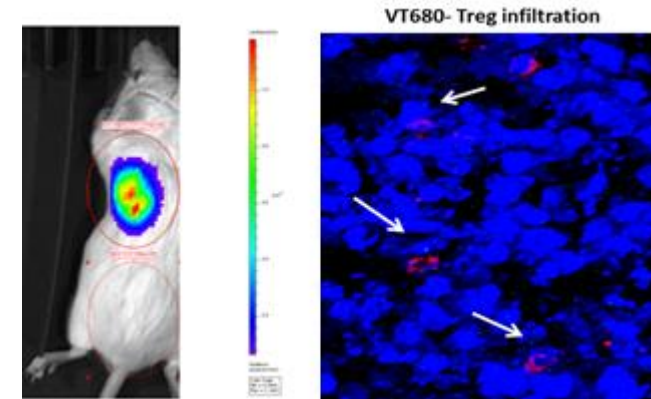
Animals insight

- Animal Models (Mice & Rat)**

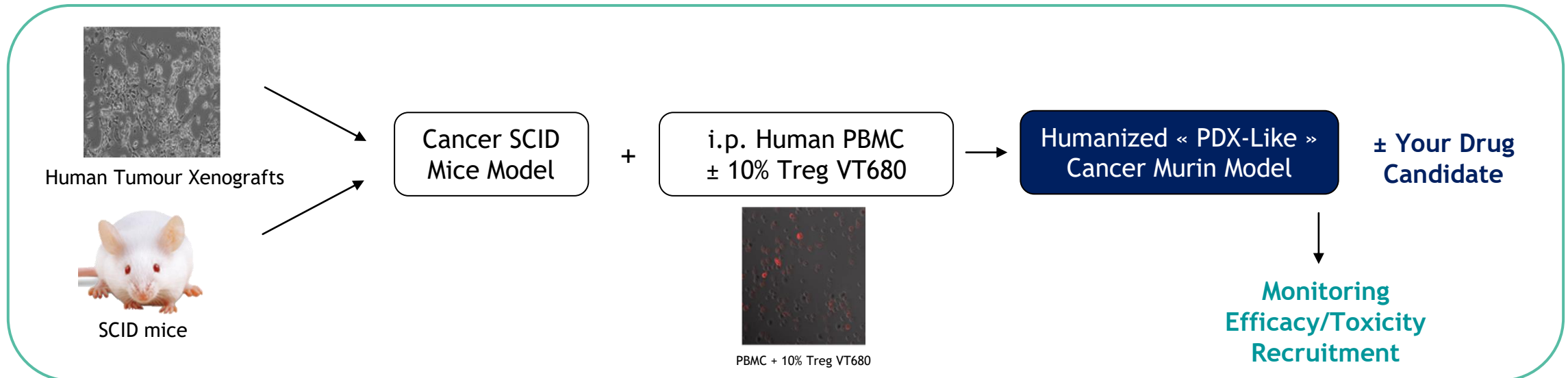
Custom-made Humanized Murine Cancer Models
Syngeneic, PDX-Like...

- Animal imaging Technologies for tumour monitoring**

Development/Growth - *Luciferase (IVIS Lumina Imaging), MRI scanner...*
Immune cell infiltration - *fluorescence staining of immune cells, X-ray...*



Fluorescence imaging: IVIS Lumina tumour and Tregs monitoring



Immune Insight

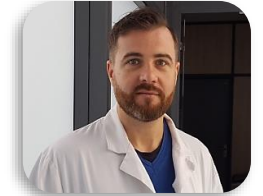
Partners



Our experts



Pr. Nadira
DELHEM



Dr. Olivier MORALES



Immune insightI

Save the balance.

Contact :

Tel: +33 (0)3 20 87 11 27 / +33 (0)6 73 31 24 84

contact@immune-insight.com

**Institut de Biologie de Lille: Campus Institut Pasteur de Lille
1 Rue du Pr Calmette 59021 Lille Cedex**